

Things To Do Around
HAMBLETON HALL



2024 / 2025



A warm welcome, fresh coffee and some great art, sculpture and ceramics are just 10 minutes from Hambleton Hall.

goldmark

Orange Street, Uppingham, LE15 9SQ

01572 821424 goldmarkart.com

Open 7 days a week

CONTENTS

About this Booklet.....	5	<i>Motorsport • Riding/Carriage Driving</i>	24
Hambleton Hall.....	6	<i>Fox Hunting • Shooting • Swimming</i>	24
Market Towns	8	<i>Fishing • Birds • Hot Air Ballooning</i>	25
<i>Oakham • Stamford • Uppingham</i>	8	Index of Locations.....	26
<i>Melton Mowbray • Market Harborough</i>	9	Index of Goods and Services	27
Landscape and Villages	10	Shopping for Antiques and Works of Art.....	29
Drives.....	10	<i>Ceramics, Oil Paintings, Watercolours and Sculpture</i>	29
<i>Ely • Lincoln • Peterborough</i>	11	<i>Antiques</i>	31
<i>Southwell • Northampton</i>	12	<i>Modern Jewellery</i>	32
Local Churches	13	General Shopping and Services.....	34
Gastro Pubs / Restaurants.....	13	<i>Fashion Shopping</i>	34
Country Houses.....	14	<i>Home and Interiors</i>	34
<i>Althorp House • Belton House</i>	14	<i>Cars</i>	35
<i>Belvoir Castle • Boughton House</i>	15	<i>Taxi Service</i>	36
<i>Burghley House</i>	16	<i>Wine Merchants</i>	37
<i>Cottesbrooke Hall • Deene Park</i>	17	<i>Bakery</i>	38
<i>Doddington Hall • Elton Hall</i>	18	<i>Hair & Beauty</i>	39
<i>Grimsthorpe Castle • The Portland Collection and Harley Gallery</i>	19	“Fay Ce Que Voudras”	42
<i>Rockingham Castle • Woolsthorpe Manor</i>	20		
Gardens	21		
Outdoor Activities.....	22		
<i>Walks/Jogging • Sailing and Windsurfing • Aqua Park</i>	22		
<i>Cycling • Golf</i>	23		

STEFA HART & CAROLINE FIELD

HAMBLETON DECORATING

Stefa started her interior design business over 40 years ago creating stylish, comfortable & practical interiors. Caroline joined her 15 years ago and the business goes from strength to strength.

Their work varies from small scale residential jobs to large scale projects. Sometimes they are employed on a consultation only basis. Presently, they are finishing

executive offices in Nottinghamshire and a large Palladian house in Hertfordshire with smaller projects in between.

Hambleton Decorating have an excellent team of builders, decorators, electricians, plumbers, curtain makers and carpet layers. We like working closely with our clients at every stage of the project.

CONTACT DETAILS:

The Old Hall, Main Street, Market Overton, Oakham, Rutland, LE15 7PL

Telephone: 01572 767145

Email: info@hambletondecorating.co.uk

www.hambletondecorating.co.uk

ABOUT THIS BOOKLET

This booklet is prepared each year to guide Hambleton Hall guests to outdoor activities, cultural assets and shops in our region.

It has been published yearly for some 37 years and was started because our area was little known for tourism and had little information for visitors. Our local tourism organization has done a great job to fill this gap but there is still a need for something more exactly adapted to the needs of our guests.

The shops (who cover the costs of the production of this guide) are chosen by us for their potential to interest our clientele.

Since we started to publish this guide the number of general antique dealers in the area has declined as interest in “brown furniture” remains low. It is encouraging to welcome the return of Claire Langley to

Stamford who combines great experience in antiques with contemporary design flair. Meanwhile, there seems to be plenty of collectors of paintings, sculpture and pottery. So institutions like Goldmark can build nationally significant collections with the aid of a strong on-line presence.

I am quite proud that our area continues to develop as a centre for “foodies” and gastro pubs, (many with ex Hambleton staff) can provide food that justifies a detour. Our region has been known for Stilton and pork pies for many years but visitors now can depend on outstanding game in season, the delicious Lincolnshire Poacher Cheese and many more local specialities like Hambleton Bakery Sourdough.

Please tell us about your own discoveries for inclusion in future editions.



(Owner Hambleton Hall)



HAMBLETON HALL

Hambleton Hall was built in 1881 as a hunting box by Walter Marshall. Marshall's fortune was derived from a shipping business, but he came to Rutland to enjoy the foxhunting.

It is hard to imagine today that in Walter Marshall's time Rutland and Leicestershire had something of the atmosphere of a resort area. Melton Mowbray, the Mecca of fox hunting, meant the same to enthusiasts as St. Moritz might to skiers or St. Tropez to beach-lovers in modern times. Hambleton Hall provided an ideal base for hunting with the Cottesmore, Quorn, Belvoir or Fernie hounds and participation in the intensive social activities centred on Melton, Market Harborough and outlying estates and houses. Many of the more distant hunt meets were reached by installing horses and humans on the train at Oakham station. I have recently acquired Walter Marshall's hunting map of the region which shows the wide range of their operations.

Some time ago I had the great good fortune to receive, on loan, Walter Marshall's scrap book. This document consists of a compilation of clippings mostly of a scandalous or scurrilous kind reflecting his interest in gossip, divorces, demi-mondaine girls (some revealing their arms and ankles) and spicy tales from the "pink-un".

Marshall remained a bachelor and when he died seems best remembered locally for the excellence of his table and cellar, and the convivial if slightly 'racey' company that he kept.

He left his house to his younger sister Eva Astley Paston Cooper. Although Eva started life as a keen devotee of the chase, from the age of 50 onwards she presided over a salon of bright young things including Noel Coward, Malcolm Sargent and Charles Scott Moncrieff, who dedicated his translation of Proust to Mrs C.

In his autobiography "Present Indicative" Noel Coward describes Mrs Cooper in the following terms: "Mrs Cooper was gay company. Her principal pleasure was to lie flat on her back upon a mattress in front of the fire and shoot off witticisms in a sort of petulant wail."

Mrs Cooper's grand-daughter has suggested that Noel Coward's rather uncharitable remarks about his benefactor were influenced by the fact that the young Noel was made to spend most of his waking hours here chopping down trees for the good of his health!

After Mrs Cooper's death Lord Trent, Dr. Brockbank and Major and Mrs Hoare enjoyed the house in their turn until the 1970s brought two big surprises. The creation of Rutland Water in 1976 (to provide water for the inhabitants of Peterborough and Northampton) transformed the outside environment. We transformed the inside in 1979/80.

The house has come full circle. As a small hotel and restaurant for discriminating diners and travellers the house has returned to a very similar convivial use to that for which it was built.





DAWSON OF STAMFORD

DIAMOND MOUNTERS - GOLDSMITHS - ANTIQUE DEALERS



The shop, in a mediaeval building in the middle of Stamford, has, for some years, been known as the region's best source of fine modern & antique jewellery, silver, etc. Climb the stairs to the mediaeval wool hall on the first floor and you enter an Aladdin's Cave housing some very fine Georgian furniture, clocks, silver etc.

For example: a pair of hand crafted, sterling silver, life sized pheasants. The cock bird measures approximately 13 ½ inches in height and 20 inches in length. It weighs approximately 116 troy ounces. The hen bird measures approximately 7 inches in height and 20 inches in length and weighs approximately 93 troy ounces.

For more details on this or any other items, please do not hesitate to contact us or come and see us, and our collection for yourself.

Dawson has a gem room on the ground floor and a silver gallery on the first floor and has expanded the showroom to take in the shop next door.

Opening Times

Monday to Saturday 9.00a.m. - 5.00p.m.

6 Red Lion Square - Stamford - Lincolnshire PE9 2AJ

Telephone: 01780 - 754166 - Fax: 01780 - 764231

email: dawsonofstamford@hotmail.com

www.dawsonofstamford.com

MARKET TOWNS

Oakham is the town closest to Hambleton Hall and it retains much charm and character. In the centre is the old market place with its Buttercross and Stocks. Close by “**Oakham Castle**” (accessed via the rear of the market place) is an exceptionally interesting building, principally, because it is not a castle. It is part of a manor house built soon after 1180 which once stood inside a powerful defensive ring wall. It is the earliest aisled hall of stone in Britain to have survived more or less complete and the earliest secular building in Britain in which we can still appreciate a scheme of figure sculpture. Musicians, a goat playing the rebec, a crouching demon and many other (mostly decapitated) characters were carved by workers of the same school as those who worked on Canterbury Cathedral.

Oakham School, founded by Archdeacon Robert Johnson in 1584, plays an important part in the life of the town with more than 1000 pupils.

*Market days are Wednesday and Saturday

*Farmer's market 3rd Saturday of month in Gaol Street.

*Guided Walking Tours by Jill Collinge, October to March by appointment (01780) 729076



Stamford is one of the most splendid of English country towns with an astonishing number of fine houses and an impressive 11 churches serving its population of 21,000 and was surprisingly undiscovered until spotted as a suitable location for BBC's dramatisation of George Eliot's Middlemarch and the film The Golden Bowl, plus in 2005 Pride and Prejudice.

Its former prosperity owed a great deal to the Roman Road Ermine Street (A1) which, from Roman times until the advent of the railways, carried almost all long distance traffic heading North/South. The coming of the railways in the 19th century brought growth to Grantham and Peterborough, but Stamford, served only by a small branch line, experienced something of a recession.

The result is a town still dominated by Georgian and earlier architecture with its mediaeval churches, Georgian theatre, 16th and 17th Century coaching inns and innumerable stone houses of many periods.

*Market day Friday

*Farmer's market every other week on Fridays

www.stamford.co.uk

Guided Walks for Stamford, April to October. Contact Jill Collinge (01780) 729076 or mobile 07712 853854.

Uppingham is the smallest of the local market towns. Quiet and rather old fashioned it has an air of bookishness largely due, I imagine, to its close ties with Uppingham School, which, like Oakham, was founded in 1584 by Archdeacon Robert Johnson. Uppingham's houses are built from warm, brown ironstone which is quarried locally and they mostly date from the 18th century. Uppingham continues to evolve and now has a significant number of worthwhile Art Galleries and Antique Shops.

*Market day Friday

Melton Mowbray is about 10 miles distant from us to the north west. Somewhat larger than the others it has a rather more commercial air. Melton is worth a visit if you would enjoy seeing the livestock market. The “Farmers Market” selling produce and some crafts every Tuesday and Friday. A small antique and bric-a-brac market is also held on Tuesday and Friday. A visit to one of the pubs where the farmers are celebrating a good deal in the market can be combined with a sampling of the region’s chief gastronomic specialities: Melton pie, Stilton cheese and ham. The Samworth Brothers, local pork pie magnates, restored and reopened the distinguished pork pie shop of Dickinson and Morris in Nottingham Street. With an on-site bakery they are turning out some fine pies, Melton Hunt cake as well as Stilton etc.

www.meltonmowbraymarket.co.uk

Market Harborough is around 40 minutes from us and a convenient stop en route to Althorp, or home. Taking the B664 from Uppingham will lead you through some beautiful countryside. The King’s Army was camped at Market Harborough prior to their defeat by Cromwell’s forces at the Battle of Naseby in 1645. Equestrian activities including the founding of the Fernie Hunt and the National Steeplechase held in the 1860s (the forerunner of the Cheltenham Festival) are prominent features in the area’s history.

Today, Market Harborough is a market town with a mix of individual and high street shops in the many 18th Century buildings. Notable landmarks include the attractive Old Grammar School founded in 1607, the Church of St. Dionysius whose 14th Century broach spire dominates the town, the Union Wharf and Foxton Locks for those keen on water transport history, and our bakery on Church Street.

Indoor General Market Tuesday - Saturday 8.00am - 4.00pm and
Sunday 10.00am - 3.00pm

Farmers’ Market on the Square - 1st Thursday every month

Artisan Fair on the Square - Last Saturday of the month
9.00am - 4.00pm

www.marketharborough.com

www.harboroughmarket.co.uk



LANDSCAPE AND VILLAGES

The hotel is beautifully situated in an area of England relatively unexploited for tourism. The villages, mostly stone, have many of the qualities of their Cotswold counterparts but fewer souvenir shops and tea-rooms. Some look particularly neat and have a number of very similar cottages and these are often 'estate villages' belonging to the major local landowner.

The landscape reflects the historical and contemporary economics of farming as well as the unusual fox hunting possibilities of the area. The nature of the soil and the above average rainfall made stock farming (sheep and cattle) practically universal until the Second War. The oceans of grass, criss-crossed with thorn hedges supplied the world's finest conditions for riding after hounds. The traditional involvement of almost all local landlords in hunting accounted for a great many of our woods, planted or at least shaped with fox hunting in mind.

If you notice a strange wavy formation on many of the pasture fields this is the relic of strip-cultivation. Before about 1740 each 'wave' was a single small holding belonging to a peasant farmer. In the interest of greater farming efficiency the smallholders were bought out, the land put down to grass and enclosed by thorn hedges and rail fences. Between its original enclosure and now, it has clearly remained pasture, for two or three ploughings would have evened-out the waves.



DRIVES

A few suggestions for morning or afternoon drives to explore the area are listed below:

1. Take the road from **Oakham** to **Brooke**, a tiny village around a triangular green. The church has very rare, old box pews, beautiful panelling and an elaborate 17th century monument. It is a typical example of a village church before Victorian restoration changed many of them into more elaborate places. An undulating road runs through very fertile countryside passing through **Ridlington** (whose church has a collection of musical instruments of the kind used by Thomas Hardy's characters in "Under the Greenwood Tree") to **Ayston**. This is a tiny estate village, in the shadow of a big house with a church next to it. From Ayston you can continue to **Uppingham** or return via **Belton** where the church has strange gargoyles, grotesque heads, from which the rain water spouts. On via **Loddington**, another village grouped around a large house to **Launde Abbey**. Here the road goes through a splendid park where the cows have a nonchalant way of standing in the road. The Abbey cafe is open daily from 10.00am - 5.00pm for morning coffee, lunch and afternoon tea and recently recommended for soup and sandwiches. Very occasionally closed for ordination retreats. From **Launde** to **Braunston**, Oakham and back to Hambleton.
2. Alternatively, from Uppingham you can go to **Lyddington**, either by car or on foot. From the south end of the village there is a path clearly marked. Lyddington is a long village stretching along the main street and almost orange in colour from its local building stone. The church is very lofty – a rich mediaeval community's thanks offering – and has a couple of brasses set into the floor. It also has the Bede House (pre-book) next door, originally a residence

for the Bishops of Lincoln. The present building dates from 1436 onwards and is open to the public, though it has no furnishings. Return via **Harringworth** (which has a vast railway viaduct as its backdrop) and **South Luffenham**. **Wing** has a turf maze designed as a kind of grass race track on which mediaeval monks used to perform acts of low-speed grovelling for purposes of penitence. **Lyndon**, is a good spot to park your car on the village green and take a 5 minute walk around the perimeter of Lyndon Hall, a beautiful compact 17th century house. The walk starts by opening a mysterious oak door set in a fine stone wall. Home via **Manton** and **Egleton**.

3. A short expedition to **Exton**, approximately 5 miles from **Hambleton** can be accomplished in half an hour or so. From Hambleton, rejoin the main road, turn right and first left at the top of **Barnsdale Hill**. This takes you down Exton Avenue towards the fine gates at **Exton Park**. Turn right before you reach the gates towards Exton village and stop before the centre of the village, where you will see a sign for Exton parish church. Leave your car and take the 5 minute walk to the church itself enjoying lovely views of Exton Park and the ruins of an ancient house destroyed by fire in 1810. Although the church is the victim of much 19c restoration, inside you will find a very remarkable collection of monuments beautifully restored thanks to an energetic campaign led by The Countess of Gainsborough. To quote Pevsner "there are few churches in England in which English sculpture from the 16th to the 18th Century can be studied so profitably and enjoyed so much as at Exton". Return via Hambleton Bakery Café (q.v. page 38).

ELY - LINCOLN - PETERBOROUGH

A drive to **Lincoln** combining a look round the Cathedral with some shopping and perhaps a bite of lunch is an excellent outing in the winter months when so many country houses are closed.

I go via the A1 north and the B6403 at Colsterworth which soon becomes Ermine Street, the Roman road which was originally built to ford a great marsh to allow the Roman legions to march to Lincoln without getting their feet wet.

The Norman Cathedral, which is the third largest in England, and nearby Castle dominate the city from their vantage points on top of an extremely steep hill. This requires a fairly sustained effort to climb, but is made easier by the many attractive and interesting shops and studios on the way. For an informal lunch, the Wig and Mitre at the top of Steep Hill is the best bet.

Ely (1 hour 15 minutes) a remote fenland town with a most magnificent Romanesque cathedral dominating the flat landscape. This can be accessed by train from Oakham.

Peterborough (35 minutes) Peterborough Cathedral is one of the most important and best preserved mediaeval buildings in Europe. Because it is in the centre of a modern town otherwise uninteresting to tourists, Peterborough Cathedral has many fewer visitors than it deserves. 2018 saw the 900th anniversary.

Usual opening hours are Monday to Saturday 10.00am - 4.00pm and Sunday 12 noon - 3.00pm. Entry is by donation.

Tel: (01733) 355315. www.peterborough-cathedral.org.uk

SOUTHWELL

Southwell There are at least two reasons to go to Southwell. England's least known great church and an extraordinarily unspoilt little town. Apparently the site was chosen as a geographically convenient regional headquarters for the diocese of York. The Minster served as HQ for a posse of Canons who divided up a huge territory to the west and North of Southwell between them. Their "Boardroom" (The Chapterhouse) constructed in 1295 is a splendid chamber with wonderful stone carving.

When I visited the Minster (www.southwellminster.org) I parked outside the door. Not in a car park or on a yellow line. There just wasn't anyone else there. The verger spent 20 minutes showing me around. The Nave is Norman (1108) the choir Early English (1234). Guided tours available, open Monday to Saturday 8.30am - 6.30pm and Sundays 8.00am - 4.30pm.

Why not drive to or from Southwell cross-country through the Vale of Belvoir and perhaps pay a visit to St Mary, Bottesford (q.v. page 13).

Southwell is about 45 minutes north of Hambleton and quite near to Newark, a much improved town with some good antique shops.

www.visitsouthwell.co.uk

NORTHAMPTON

Henry Moore, Graham Sutherland and Charles Rennie Mackintosh.

Northampton is not a beautiful metropolis but if any of the above are of interest you could make a detour en route for London or the Cotswolds.

St. Matthew's church is a large neo-gothic Victorian building on your way into Northampton on the Kettering Road, approximately two miles from the centre of town. Call in to see Moore's Madonna and Child of 1943 and Graham Sutherland's Crucifixion of 1946, legacies of an art-loving former vicar.

78 Derngate, celebrated its centenary year in 2017, is a medium sized terraced town house formerly owned by a successful Northampton model manufacturer W.J.Bassett-Lowke. Mackintosh was commissioned in 1916/17 to remodel the house and a great deal of his work remains. www.78derngate.org.uk

Opening Times 2024

1st February to 22nd December
Tuesday to Sunday and Bank Holidays
10.00am - 5.00pm

Contact 01604 603407

SOME LOCAL CHURCHES

There are so many good ones within a stones-throw of Hambleton Hall that I have come round to church visiting as a fascinating pastime – especially in winter when domestic buildings are closed. Here are some favourites.

Exton (St Peter & St Paul) The main point of Exton Church is the remarkable monuments inside including Grinling Gibbon’s amazing memorial for the Third Viscount Campden. According to Pevsner “There are few churches in England in which English sculpture from the 16th to the 18th Century can be ... enjoyed so much”.

Teigh (Holy Trinity) A very charming and unusual 18th Century Church.

Grantham, Brook St (St Wulframs) Simon Jenkins gives this Church a five star rating for its very fine and tall spire and mediaeval chained library which defeats would-be thieves and borrowers alike by chaining the works to the shelves. Look out for a pair of Peregrine Falcons nesting on the spire!

Brooke (St Peter) Enchanting interior with splendid pews, pulpit, reading desk, screens, etc. dating from the 16th or 17th Century.

Tickencote (St Peter & St Paul) The chancel arch c1160 “a tour de force of shafting and arch decoration wildly overdone and in addition incompetently constructed” Pevsner – Oh well its still standing, unrestored!

Bottesford (St Mary the Virgin) Approximately 4 miles due north of Belvoir Castle, this church houses the tombs of the Dukes and Earls of Rutland and their predecessors from 13th to the 18th Century. It provides a magnificent history of church sculpture, of each age, in one small space. www.stmarysbottesford.co.uk

GASTRO PUBS / RESTAURANTS

We are very proud that we have some excellent gastro pubs and restaurants within 20 minutes drive of Hambleton. The first two are run by ex-Hambleton chefs or hosts. Please check opening days and times as they may be closed on set days.

Hitchen’s Barn, Burley Road, Oakham LE15 6DH
(Louise & Neil Hitchen) Telephone: (01572) 722255

The Olive Branch, Main Street, Clipsham, Rutland LE15 7SH
(Ben Jones) Telephone: (01780) 410355
Handy for Stamford, Grimsthorpe, Belton etc.

The Wheatsheaf, 1 Stretton Road, Greetham, Rutland LE15 7NP
(Carol & Scott Craddock) Telephone: (01572) 812325

The Kings Arms, 13 Top Street, Wing, Rutland LE15 8SE
(Kate & James Goss) Telephone: (01572) 737634

The Stag & Hounds, 4 Main Street, Burrough-on-the-Hill LE14 2JQ
(Dom Clarke & Antonia Nelhams) Telephone: (01664) 454250

COUNTRY HOUSES

This region is exceptionally well provided with great country houses and fabulous collections. A selection of favourites follows, do double check their opening times before leaving Hambleton as some houses close at short notice.

ALTHORP HOUSE

NN7 4HQ

50 minutes from Hambleton

The Earl Spencer

Telephone: (01604) 770006

www.althorpestate.com

Although a bit further than the others, Althorp (pronounced Altrup) is on the way to the Cotswolds and can be on the way to London if you take the M1.

Its collection is quite outstanding concentrating the best items from Althorp and Spencer House in London.

Opening Times 2024

Summer

Please refer to website.

BELTON HOUSE

NG32 2LS

35 minutes from Hambleton, 2 miles from Grantbarn

National Trust

Telephone: (01476) 566116

www.nationaltrust.org.uk/belton-house

Belton forms a perfect contrast to Burghley House and was built by master mason William Stanton between 1685-88. It is as formal, compact and harmonious in its proportions as Burghley is rambling and eclectic. Belton was passed to the National Trust from Lord Brownlow in 1984.

In the past the combination of the blinds and ropes keeping the customers well away from works of art interfered with my enjoyment in some cases. There is some wonderful silver and silver-gilt items on display as well as the fine collection of old masters including two wonderful huge paintings by Hondecoeter of exotic birds etc.

A lakeside walk has also been developed by the N.T. and the splendid boat house has been restored.

Opening Times 2024

House

2nd March to 31st December 11.00am - 4.00pm

Estate

Daily 9.30am - 5.30pm

Stables Café

9.30am - 5.00pm

BELVOIR CASTLE

(pronounced 'Beaver')

His Grace the Duke of Rutland

Telephone: (01476) 871001

www.belvoircastle.com

NG32 1PA

30 minutes from Hambleton

David, 11th Duke of Rutland and his charming wife Emma took over in 1999.

Belvoir has a fantastic site on the edge of a steep escarpment dominating the broad vale to the North. The Manners family was so old, well connected and wealthy even in 1816 when Wyatt built the present castle that one wonders why the design chosen owes so much to swagger and so little to convenience.

Belvoir houses a wonderful collection and the statue garden is always worth a visit.

Opening Times 2024

Castle and Gardens

April to September 10.00am - 5.00pm

Café

9.30am - 4.00pm

Last entry 3.30pm

Selected days closed for events

Admission and parking charges apply

BOUGHTON HOUSE

NN14 1BJ

50 minutes from Hambleton

His Grace the Duke of Buccleuch & Queensberry

Telephone: (01536) 515731

www.boughtonhouse.co.uk

If you are lucky enough to be here on the right day this together with Grimsthorpe would be my first choice of local 'statelies'. It is more lived in than many others and one might quite easily see a half finished jigsaw on a fabulous Boule secretaire! In addition to the wonderful collection of pictures, furniture, clocks, tapestries, etc., two features stick in my mind when I think of Boughton - the marvellous old Buccleuch retainers who act as guardians of the family treasures and the incredible state of repair of carpets, curtains and chair covers - many of them in use - on and off - over the past 300 years.

The current Duke is working hard on some ambitious landscaping and landscape restoration projects and in 2009 the Orpheus Project was completed.

The Grand Etang, the long forgotten lake which once dominated the principal approach to the house, has been re-dug and filled with clear spring water in which the magnificent north front of the house is magically reflected for the first time in two centuries.

Opening Times 2024

House and Gardens 1.00pm - 5.00pm

Saturday 4th to Monday 6th May

Saturday 25th to Monday 27th May

Thursday 1st to Monday 5th August

Thursday 8th to Monday 12th August

Thursday 15th to Monday 19th August

Thursday 22nd to Monday 26th August

Thursday 29th to Saturday 31st August

Sunday 1st September

BURGHLEY HOUSE

PE9 3JY

15 minutes from Hambleton

Mr & Mrs Orlando Rock
Telephone: (01780) 752451
www.burghley.co.uk

Sir William Cecil, the first Lord Burghley was Lord High Treasurer to Queen Elizabeth I. His administrative and financial expertise must have been one of the foundation stones on which her very successful reign was built. Burghley House is a testimony to his remarkable power. A great Elizabethan palace with a magical roof line of minarets, towers and spires approached through a perfect Capability Brown (i.e. 18th Century park). Miranda Rock, cousin of the 8th Marquess of Exeter, is currently in charge with husband Orlando. In 2007 her mother Lady Victoria Leatham's last year was marked by the opening of her splendid "Garden of Surprises" designed by George Carter. This wonderful attraction combining a new garden of great style and beauty with a certain amount of action which will amuse young and old. For example... a hand pump operated by the curious visitor fills a huge transparent tube. Once full the water triggers a release mechanism and fuels a spout which douses the unwary spectator.

Tour the State Rooms at your own pace, hire an audio guide, or approach the many helpful guides with any questions. The enormous collection includes more pictures, ceramics, furniture and tapestries than you can absorb.

The 2024 Treasury Exhibition – Treasures from the East - take a journey to the Far East through fascinating items in Burghley's treasured Collection that are not normally on display.

Spring sees the opening of a new adventure play area for families which draws inspiration from the distinctive architecture of Burghley.

The Orangery Restaurant is well worth considering for a light lunch or afternoon tea. Telephone: 01780 761989.

Burghley Park is open to the public until dusk.

There is a full events programme throughout the year including craft workshops, concerts for all tastes, fine food market and the horse trials.

Opening Times 2024

House

Open from 16th March - 29th October
10.30am - 4.30pm
(excluding Fridays)

Gardens

Daily 10.00am - 5.00pm

Parkland

Open daily 7.00am - to dusk

Orangery Restaurant

Open daily 10.00am - 5.00pm
(excludes selected Fridays)

Garden Café

Daily 10.00am - 4.00pm

COTTESBROOKE HALL

NN6 8PF

60 minutes from Hambleton

Alastair Macdonald-Buchanan
Telephone: (01604) 505808
www.cottesbrookehall.co.uk

This totally lived-in house belongs to a distinguished whisky-distilling dynasty who keep the house and garden in immaculate shape.

The house is a Queen Anne gem of sensible proportions and contains a uniformly splendid collection of which the highlight is the remarkable collection of British Sporting Pictures.

Cottesbrooke is a bit further from Hambleton than many other great houses but it is well worth a detour especially if you are heading south west towards the M1, Oxford, or the Cotswolds and provides a good base for a visit to Coton Manor Gardens (see gardens).

(From Hambleton take the A508 south from Market Harborough and turn right at Kelmarsh for Cottesbrooke).

Opening Times 2024

1st May and 26th September

May and June: Wednesday and Thursday, 2.00pm - 5.30pm
July, August and September: Thursday only 2.00pm - 5.30pm

Bank Holiday Mondays from May to September
2.00pm - 5.30pm

DEENE PARK

NN17 3EW

35 minutes from Hambleton

Mr & Mrs Robert Brudenell
Telephone: (01780) 450278
www.deenepark.com

Deene Park is no exception to the rule that the houses open least are the most interesting to visit.

It has a beautiful, well kept garden, charming rooms which are very much lived-in, and some wonderful pictures and furniture. The 7th Earl of Cardigan ("hero" of Balaclava and the Charge of the Light Brigade), from whom the Brudenells are indirectly descended, was a former owner of Deene and there are a number of pictures and other artefacts which bear witness to the times of this eccentric figure.

Private visits for groups can be arranged by appointment.

Opening Times 2024

Every Sunday and Bank Holiday Monday
from 31st March to 26th August

Wednesdays in July 17th, 24th, 31st
and August 7th, 14th, 21st

Gardens, Parkland & Tearoom

1.00pm - 5.00pm

House Opening

2.00pm - 5.00pm

DODDINGTON HALL

LN6 4RU

90 minutes from Hambleton

Mr & Mrs James Birch
Telephone: (01522) 694308
www.doddingtonhall.com

Doddington Hall is an Elizabethan manor house in mellowed brick crowned with turrets and cupolas, 5 miles south west of Lincoln.

It contains a fine collection of china, tapestries and Stuart and Georgian furniture. The Hall has a splendid farm shop and cafe where you can obtain a very respectable lunch or picnic, (01522 688581).

In the last 2 years a rewilding project began, so watch out for the mangalitzza pigs on a guided walk to see them rooting.

Cycle enthusiasts will enjoy the huge bike shop selling cycles from Giant and other brands.

Opening Times 2024

Hall and Gardens

Open from 29th March to 29th September

Wednesday, Friday, Sunday and Bank Holiday Monday

Gardens 10.00am - 4.00pm

Hall 11.00am - 4.00pm (Timed ticket 11.00am - 4.00pm)

Shops open daily including a
farm shop, bike shop and homewares

ELTON HALL

PE8 6SH

35 minutes from Hambleton

Alexandra Proby
Telephone: (01832) 280223
www.eltonhall.com

Elton Hall owes its origin to a Proby who, like the first Lord Burghley, made himself useful to Queen Elizabeth I. The house is therefore mostly Elizabethan with major 19th century additions.

It is very much lived in and has not been attacked by museumitis which is elsewhere reaching epidemic proportions. Elton's library is of world class and includes Henry VIII's prayer book autographed by the monarch and two of his wives.

Amongst a number of beautiful things, you could not possibly miss a Millais (19c) portrait of a little girl which is to my mind one of the most attractive Victorian portraits anywhere.

The gardens you see today are the work of Lady Proby, who has spent many years re-designing and re-planting them.

Private parties by appointment between May - August.

Bosworth Garden Centre (01832) 343104 in the grounds of Elton Hall, is worth visiting.

Opening Times 2024

Between 26th May to 29th August

May 26th, 27th, 29th and 30th

June and July Wednesday and Thursday

August Wednesday, Thursday, Sunday and Bank Holiday Monday
2.00pm - 5.00pm

GRIMSTHORPE CASTLE

PE10 0LY

30 minutes from Hambleton

Telephone: (01778) 591205

www.grimsthorpe.co.uk

Grimsthorpe has been the home of the Willoughby de Eresby family (latterly the Earls of Ancaster) since about 1516 and houses a marvellous collection of pictures, furniture and other works of art. Like many buildings of such antiquity which have been lived in by a wealthy and powerful family, the house combines many architectural styles but Vanbrugh's north front (1724) and the magnificent double cube entrance hall on their own make a visit worthwhile. Stefa was particularly fascinated by the interior decoration of parts of the house especially John Fowler's (Colefax and Fowler) work carried out in the 1950s.

If Grimsthorpe happens to be open when you are here it should be almost first choice. The house is also handily placed for a favourite gastropub The Olive Branch at Clipsham (q.v. page 13).

Opening Times 2024

Park and Gardens

Open on select days March to October
10.30am - 5.30pm (last entry 4.30pm)

Castle

Open on select days March to October
12 noon - 4.00pm (last entry 3.15pm)

Closed Fridays and Saturdays

THE PORTLAND COLLECTION

MUSEUM AND HARLEY GALLERY

S80 3LW

70 minutes from Hambleton

The Courtyard at Welbeck

Telephone: (01909) 501700

www.harleygallery.co.uk

Welbeck Abbey is a great House which was formerly the seat of the Dukes of Portland. The House is now in the capable hands of the last Duke's grandson William Parente who pioneered a novel approach to the provision of public access through the construction of a beautiful Art Gallery.

The Portland Collection formed over some 500 years by the Cavendish Bentinck family and their forbears is now housed in the gallery and comprises outstanding objects from the Welbeck Abbey collection. Wonderful paintings, miniatures, silver jewellery, drawings etc are beautifully shown in the new gallery and the show is refreshed annually with new exhibits from the Abbey's inexhaustible supply.

The Harley Gallery next door is a forum for exhibitions of Contemporary works.

In addition the Courtyard has an excellent Café ideal for a light lunch and a very good farm shop.

Opening Times 2024

Tuesday to Sunday 10.00am - 4.00pm

Closed: Easter Sunday, Christmas Day,
Boxing Day and New Years Day

Free entry and free parking

ROCKINGHAM CASTLE

LE16 8TH

25 minutes from Hambleton

Mr & Mrs James Saunders-Watson

Telephone: (01536) 770240

www.rockinghamcastle.com

Rockingham is one of the most attractive villages in our area, and the castle with its spectacular hilltop site is most picturesque. The collection is fascinating and contains some surprises like 20th century English pictures and the teas are delicious.

Rockingham now hosts a very full calendar of events such as Rockingham history days, food fayres, music events etc.

Perhaps you will be puzzled, as to why, when the original fortification was built, about 900 years ago it was arranged so as to face due North. Michael Saunders Watson provided me with one answer. Along the wide valley over which the castle keeps watch runs the river Welland. The Danes and Vikings apparently ran their boats up the river and used it as the base for raids on surrounding country.

Opening Times 2024

7th April to 27th May
Sundays and Bank Holiday Monday

2nd June to 29th September
Tuesdays, Sundays and Bank Holiday Mondays

Castle

12 noon - 4.00pm

Gardens, Grounds & Tea Room

11.00am - 4.00pm

WOOLSTHORPE MANOR

NG33 5PD

25 minutes from Hambleton

Former home of Sir Isaac Newton

National Trust

Telephone: (01476) 860338

www.nationaltrust.org.uk/woolsthorpe-manor

Woolsthorpe Manor is a 17c Manor house which is chiefly interesting for its association with Sir Isaac Newton. An ancient apple tree makes the unlikely claim that its fruit inspired the great man.

To get to grips with gravitational theory, the National Trust has a number of exhibits relevant to Newtons life and work.

Opening Times 2024

House

February to October times vary

Gardens

February to October 10.00am - 5.00pm

Closed Tuesdays and Wednesdays

Please check website for up to date details.

GARDENS

For those especially keen on gardens I recommend a drive into Northants to visit three excellent gardens situated in the same area. Cottesbrooke Hall, Coton Manor and Kelmarsh Hall.

Barnsdale Gardens, www.barnsdalegardens.co.uk (01572) 813200, much closer at hand and very handy for our own bakery and café (q.v. page 38) was created by Geoff Hamilton some years ago as the backdrop to his TV series “Gardeners World”. The gardens consist of some 38 separate small gardens which provide great inspiration for those with gardens of their own of a similar scale. They also have an excellent plant nursery.

March to October 9.00am - 5.00pm

November to February 10.00am - 4.00pm

Coton Manor (Open from 29th March 2024) Tuesday to Saturday and Bank Holiday weekends, 11.30am - 5.00pm, last admission 4.45pm. Café open during regular garden opening times and provides lunches and cakes. This is the best large garden in our region. Admission charges apply. www.cotonmanor.co.uk (01604) 740219.

Easton Walled Garden (01476) 530063, is a very successful restoration project master-minded by Lady Ursula Cholmeley from a very grand garden abandoned in the 1950's.

Open until 22nd December 2024 on Wednesdays to Sundays, and Bank Holiday Mondays 11.00am - 4.00pm. Includes excellent gift shop, plant stalls and café.

Haddonstone Show Gardens look more and more impressive each year with structures such as an orangery and a gothic grotto, a statue walk and great planting overseen by an excellent gardener who makes sure the gardens are worth visiting at all times of year. www.haddonstone.com (01604) 770711



OUTDOOR ACTIVITIES

WALKS /JOGGING

The walk around the **Hambleton peninsular** starts by walking towards the water, through our garden and field. It consists almost entirely of a rough road used only by the occasional fisherman. The circular route gives constantly changing views of the surrounding landscape and is strongly recommended. It is possible to shave a little off the distance by cutting home along the peninsula road (approx 1 hr 40 mins).

A full circuit of the hides and tracks comprising the **bird watching centre** at Egleton involves around 2 ½ miles walk.

Details of this and other walks in the neighbourhood are included in a pack in all guest rooms.

I have supplied Reception with details of a walk around **Grimsthorpe Park** which takes you through the magnificent grove of ancient oaks. The shafting sunlight on a dappled fallow buck on a summer evening is a magical sight but don't be late for dinner! (approx 2 hours)

A second walk involves a 6-7 mile circuit starting at the TV mast above **Barleythorpe** (approx 2 ½ hours).

Recently a number of clients have much enjoyed walking around most of Rutland water from **Manton** to **Barnsdale Lodge**. This is not a complete circuit so you will need a taxi from Barnsdale to Manton to rejoin your car. (Approx 7 ½ miles).

SAILING AND WINDSURFING

www.anglianwaterparks.co.uk

With such a large expanse of water, 5 miles in length with a surface area of 3,100 acres, some fine sailing is found on Rutland Water.

Rutland Watersports Centre operates a day sailing centre at Whitwell (01780) 460154 (See leaflets on Reception).

They also rent sailing dinghies (from £30 per hour). Rowing boats, paddleboards, canoes and kayaks can be hired which seats 1-6 persons (from £18 per craft, per hour).

Beginners courses in sailing and windsurfing can be arranged. Sailing and windsurfing tuition from half day £85 per person to £165 for full day per person. Personal tuition from £35 per person per hour for sailing and windsurfing (equipment hire extra).

They sell chandlery, windsurfing equipment and leisure wear in the shop – Whitwell Watersports Centre.

Open April to October, 7 days: 9.00am - 5/7pm*.
November to March, 5 days (closed Tuesday and Wednesday):
9.00am - 3pm*.

*Daylight and weather dictates closing times.

AQUA PARK @ RUTLAND WATER

Opens 18th May through to 23rd September 2024. This is a swimmers obstacle and adventure course undertaken in a wetsuit; charges apply.

www.aquaparkgroup.co.uk

CYCLING

A bicycle provides an excellent means to tour the quiet parts of Rutland. While there are many miles of traffic free tracks around Rutland Water and the Hambleton Peninsular, at busy periods when these tracks are infested with other cyclists I recommend that you head off to the unspoilt lanes around Braunston. We have cycles available for hire on-site or a wide selection of machines including electric bikes available from Whitwell (01780) 460705 or Normanton (01780) 720888.
www.rutlandcycling.com

GOLF

We suggest that you call the club in advance in case matches are in progress. I have given each course a personal star rating to help you make a choice. Naturally access to the better courses is sometimes limited and prior booking is generally essential.

Luffenham Heath Golf Club (4*)

(Near Stamford)

www.luffenhamheath.org

Telephone: (01780) 720205 Pro: (01780) 720298

Green Fees - depending upon day:

April & October – from £85

May to September – from £110

November to March – from £60

Visitors are welcome Monday to Friday with the exception of Tuesdays and public holidays. Weekends are subject to availability (please call in advance).

Stoke Rochford Golf Club (3*)

(Great Ponton)

www.stokerochfordgolfclub.co.uk

Telephone: (01476) 530275 Pro Shop (01476) 530218

Open with guidelines to follow.

Green Fees:

Monday to Friday from £35 per round

Saturday, Sunday and Bank Holidays from £50 per round

Please call the Office Manager to make arrangements for your day's golfing.

Greetham Valley Golf Club (3*)

(9 miles from Hambleton)

www.greethamvalley.co.uk

Telephone: (01780) 460444

Open with guidelines to follow.

Visitors: 18 holes

Summer 1st April to 31st October 2024 £37 weekdays

£48 weekends

Winter 1st November to 31st March 2025 £26 weekdays

£32 weekends

Par 3: £10.00 all week

Rutland Water Golf Club (3*)

(opposite Hambleton Hall)
www.rutlandwatergolfcourse.co.uk
Telephone: (01572) 737525

Now consists of 9 holes par 3 course and additional 18 holes full size course. Much improved and has wonderful views over Rutland water.

Green Fees: 18 holes £28 weekdays £33 weekends.
Par 3 £9 weekdays £10 weekends

MOTOR SPORT

Former F1 racing driver Jonathan Palmer specialises in providing small groups with a remarkable driving experience at his circuit near Bedford. A variety of incredibly fast cars are available and Palmer allows drivers far more freedom to drive fast than any similar organisation. Reception has full details and our Restaurant Director Graeme can speak from first-hand experience of this remarkable sport. For those who can enjoy a day without any booze. Telephone: (01403) 733999.

RIDING/CARRIAGE DRIVING

Gail Newcombe, Somerby Riding School
Telephone: (01664) 454838

Gail's operation is well geared to the needs of our clients and is situated in a very beautiful area well equipped with bridleways. Gail can offer lessons, hacks or ½ day rides in which you would get a good look at some of our most attractive county and has now established her indoor and outdoor menage and cross country course. (Riding hats and boots can be supplied). www.somerbyequestriancentre.co.uk

FOXHUNTING

Fox hunting in its modern form was developed by Tom Noel at Exton in the early 18th century. The sport has had a profound influence on our landscape, economy and population.

Traditional fox-hunting was outlawed in 2005 by legislation promoted by well meaning animal lovers (who thought, wrongly the change would be in the foxes' best interest) allied with spiteful toff-haters. Local hunts still meet and sally forth with their hounds but **they do not have the intention of catching a fox.**

The repeal of this ludicrous legislation is eagerly awaited in Rutland. Meanwhile we would be delighted to arrange for keen equestrians who have innocent intentions to accompany one of our local packs.

SHOOTING

There are a number of excellent pheasant and partridge shoots near Hambleton which are available by the day for parties of around 8 guns. The hotel will introduce shooting parties directly to the shoot to conduct their own negotiations.

SWIMMING

Inspire2tri are partnered with Anglian Water to provide Open Water Swimming (Whitwell site) throughout the season (April to September), every Sunday 8.00am - 10.00am, or Tuesday and Thursday evenings during the summer, subject to water temperature being 11c or above and wetsuits optional at or above 14c! Booking essential, £8, wetsuit hire available. www.inspire2tri.co.uk Telephone (01572) 737185.

FISHING

Rutland Water is well stocked with both brown and rainbow trout of a good size, pike and zander also available. In order to fish you need:

A rod licence (purchase online from the Environment Agency.)

Day permit £36 (maximum 8 fish)

£30 (maximum 4 fish)

or Sporting ticket (catch and release) £26

Season Dates: 8th March 2024 to 31st January 2025

Boat hire £30

In addition your chances will be improved if you hire a motor boat which can be hired for the day. The Authority allows fishermen to take out a boat alone if you have a mobile phone. Boats, licences, permits, etc. are obtained from the new fishing lodge at Normanton, (01780) 686441.

You may further improve your chances by securing the services of Rob Waddington at Rutland Fly Fishing Adventures (07711) 182853, who will act as ghillie, improve your casting or suggest the deadliest fly.

Brown Trout are not permitted to be taken during the season. Check restrictions for Rainbow Trout when booking.

BIRDS

Rutland Water has become a Mecca for birdwatchers because of its large resident population of water birds, waders, glamorous migrants and visitors. (Ospreys, Hobby, Terns etc. etc.)

The starting point for birding is the impressive visitor centre at Egleton (01572) 770651 which can hire binoculars if you do not have your own, and has recently installed a remotely controlled TV camera to spy on nesting birds who think they are nesting in privacy on a remote island.

Open all year, 9.00am - 5.00pm daily. Day permit £7.00 Adult, £6.00 OAP's, Junior/Student, £17.00 family. On a recent visit in March with an enthusiastic pal we counted 47 species in a 3 hour stroll around the hides. www.lrwt.org.uk/awbc

If you would like a specialist to show you around we can usually arrange for a warden or voluntary warden to accompany you. They offer a two hour walk for £150 for 1-15 people. Contact (01572) 720049.

There is also a smaller visitor centre at Lyndon, which has some lovely walks and one of the hides has an excellent view of an Osprey nesting site. Open 9.00am - 5.00pm daily in mid-March to September.

HOT AIR BALLOONING

www.virginballoonflights.co.uk

Virgin Balloons (01952) 212750, is approved by the Civil Aviation authority and based nearby. For certain meteorological reasons balloon rides seem to happen a bit early (6.30am) or a bit late (6.30pm). From £169 per person.

INDEX OF LOCATIONS

OAKHAM

Bat & Bottle	37
Cavells	34
Creme Hair & Beauty	39
Hambleton Bakery	38
Heidi Kjeldsen	32
Meadows Executive Cars	36
Taylor Baines	34
Top 555	35

STAMFORD

Dawson of Stamford	31
Hambleton Bakery	38
Gladwells	29
Claire Langley Antiques	31

UPPINGHAM

Goldmark Gallery	29
------------------------	----

EXTON

Hambleton Bakery	38
------------------------	----

MARKET HARBOROUGH

Hambleton Bakery	38
------------------------	----

OUNDLE

Hambleton Bakery	38
------------------------	----

ROTHLEY

Hambleton Bakery	38
------------------------	----

ST IVES

Hambleton Bakery	38
------------------------	----

WEST BRIDGFORD

Hambleton Bakery	38
------------------------	----



INDEX OF GOODS AND SERVICES

provided by establishments listed in this booklet

ANTIQUES AND WORKS OF ART

Ceramics	Goldmark Pots
Furniture - General	Dawson of Stamford Ltd Claire Langley Antiques
Jewellery Antique	Dawson of Stamford Ltd
Oil Paintings	Gladwells Goldmark Gallery (Contemporary)
Pottery	Goldmark Gallery
Prints/ Maps	Goldmark Gallery
Sculpture	Goldmark Gallery (Contemporary)
Silver	Dawson of Stamford Ltd
Watercolours and Drawings	Gladwells Goldmark Gallery (Contemporary)

GENERAL SHOPPING AND SERVICES

Bakery	Hambleton Bakery
Cars	Top 555
Fashion - Ladies	Cavells
- Gents	Cavells
Hair & Beauty	Creme Hair & Beauty
Framing	Goldmark Gallery (Contemporary)
Hats, Shoes and Handbags	Cavells
Interior Design	Hambleton Decorating
Jewellery/Goldsmiths	Dawson of Stamford Ltd Heidi Kjeldsen
Outdoor Clothing	Cavells
Taxi Service	Meadows Executive Cars Ltd
Upholstery and Curtains	Taylor & Baines
Wine Merchants	Bat & Bottle



TOP 555

LUXURY & PERFORMANCE CARS

- Up to 40 cars always on display from Aston Martin, Bentley, Ferrari, Range Rover to Rolls-Royce
- One of the largest independent showrooms in the UK
- Family owned and run. We have built our business based on trust and delivering our promise
- A fantastic selection of highly prepared, beautiful, hand-picked cars

Always looking to purchase high specification, low mileage examples of your Luxury and Performance Car

Bespoke finance solutions

Client confidentiality assured

Rated Excellent on TrustPilot

Opening times:

Monday - Friday: 08:00am - 17:30pm

Saturday: 08:30am - 16:30pm

Sunday: Closed (phones diverted)

Telephone: 01572 774 830

www.top555.co.uk

TOP555 Ltd, Burley Road, Oakham, Rutland LE15 7AA

email: sales@top555.co.uk

ANTIQUES AND WORKS OF ART

Ceramics, Oil Paintings, Watercolours and Sculpture

THE GOLDMARK GALLERY

14 Orange Street, Uppingham LE15 9SQ

Telephone: (01572) 821424

Email: info@goldmarkart.com

www.goldmarkart.com

It has been 50 years since Mike Goldmark set up shop in Uppingham. What began as a second-hand bookshop has now evolved into a vast treasure trove of 20th century art and ceramics. Part exhibition space, part publishing house, film department, framing workshop and print atelier, the Goldmark Gallery lives up to its tagline, 'A shop like no other'. You don't have to take our word for it, either:

'The extraordinary Goldmark art gallery. In no other small town can you gaze at woodcuts by Kandinsky and original prints by Picasso. With up to 20 exhibitions a year, as well as concert and recitals, the coffee machine works almost as hard as the 40 staff.' *The Sunday Times* 2022

'...an art-lover's paradise... Goldmark is jaw-dropping, crammed with originals and original prints by the likes of Graham Sutherland, Henri Matisse, John Piper, George Chapman and Le Corbusier... fine bronzes by Elisabeth Frink and Frank Dobson, ceramics by Kang-hyo Lee and Clive Bowen.' *The Sunday Telegraph* 2020

Opening Times

Monday to Saturday 9.30am - 5.30pm

Sunday 11.00am - 4.00pm

GLADWELL & PATTERSON

1 High Street, Stamford PE9 2AL

Tel: 07866 450070 / 07772 307807

Email: rutland@gladwellpatterson.com

www.gladwellpatterson.com

Internationally renowned art gallery Gladwell & Patterson are opening a fabulous new gallery space at 1 High Street, Stamford in September 2024. They have created an elegant new gallery over several floors within a historic landmark on Red Lion Square. Many of our guests will remember the gallery's previous space on the wonderful Mill Street in Oakham. As a fine art business, Gladwell & Patterson has a long history of art dealing and connoisseurship. The firm has been owned and run by the Fuller family for several generations, with Cory and Glenn at the helm today. The parent gallery is in London's Beauchamp Place.

Gladwell & Patterson's extensive stock is eclectic. On my recent visit my eye was caught by a charming small abstract work by Ben Nicholson, but most of the works on show were from 19th and 20th century artists. Landscapes, still life and David Shepherd's Elephants formed elements in a wide and enjoyable collection which include other much loved British artists including Munnings and Seago. There is a significant body of French works including Impressionist and Post-Impressionist painters, perhaps arising from the friendship of Harry Gladwell with Vincent Van Gogh.

Cory Fuller, Natalie Cieslik and Rebecca Chatterton are welcoming and knowledgeable and can arrange private views if requested. Gladwell & Patterson are happy to provide a base and refreshments for Hambleton guests making a foray over to Stamford, so we do really recommend a visit.

Opening Times:

Opening in September 2024

Monday to Friday 9.30am - 5.30pm

Saturday and Sunday 10am - 4.00pm



Heidi Kjeldsen

Diamond, Gemstone & Pearl Specialists



MEMBER
The NATIONAL
ASSOCIATION of
JEWELLERS
THE MARK OF QUALITY

Beautifully Bespoke Jewellery

- Fine Jewellery Showroom
- Wedding Jewellery
- Special Commissions
- CAD Studio
- NAJ Valuations
- Repairs
- Gemstones

5 The Maltings, Mill Street,
Oakham LE15 6EA

t: 01572 722666

e: heidi@heidikjeldsen.co.uk

www.heidikjeldsen.co.uk

Antiques

DAWSON OF STAMFORD LIMITED

6 Red Lion Square, Stamford PE9 2AJ

Telephone: (01780) 754166

Email: dawsonofstamford@hotmail.com

www.dawsonofstamford.com

John Dawson's shop, in a fine and ancient building in a central part of Stamford, has over thirty years built a very wide following. Clients come from far afield to enjoy Stamford shopping at its best. On the ground floor you will find a collection of smart contemporary jewellery and watches mixed with an interesting collection of traditional silver items. John's interest in antiquities pervades all areas of his business with a particularly strong antique silver collection, jewellery from the 18c and 19c and upstairs a splendid room housing fine antique furniture, clocks etc.

Dawsons also provide excellent service to clients who need jewellery and silver repaired and restored.

Opening Times

Monday to Saturday 9.00am - 5.00pm

CLAIRE LANGLEY ANTIQUES

The Warehouse, Halliday's Yard, Radcliffe Road, Stamford PE9 1ED

Telephone: (01780) 592599

Mobile: 07752 919172

Email: claire@clairelangley.co.uk

www.clairelangley.co.uk

Lovers of beautiful interiors and antiques will be delighted to see that Claire Langley has returned (after an interval of a few years as a successful online dealer) to large new premises in Stamford.

Claire has sofas, chairs, chest of drawers, wardrobes, boot scrapers and much more. They may be antiques, made in Claire's own workshop or perhaps the product of her own upholstery team.

Claire's shop consists old and new very successfully to give a contemporary feel which would feel right in a chic docklands warehouse apartment or well designed country house.

She personally offers, a great welcome, great experience and expertise in the field of antique furniture and flair for design.

Opening times:

Monday to Saturday 10.00am - 5.00pm

Modern Jewellery

HEIDI KJELDEN LTD

5 The Maltings, Mill Street, Oakham LE15 6EA

Telephone: (01572) 722666

Email: heidi@heidikjeldsen.co.uk

www.heidikjeldsen.co.uk

Twitter: [RockRingLady](#)

Capture a moment for a lifetime...

At Heidi Kjeldsen, a world of mesmerising jewellery awaits – exclusive collections you'll simply adore. Where the finest diamonds, exquisite gemstones and premium pearls are set in timeless designs.

Experience contemporary chic for everyday living, elegant classics dazzling with splendour, or commission a gift for that special person.

Whether you buy with confidence online or visit the Oakham showroom in the heart of Rutland, you'll discover an array of truly beautiful jewels handcrafted with love.

From exquisitely elegant diamond, pearl and gemstone designs to contemporary Murano glass jewellery, every piece is lovingly handcrafted to perfection. Classical in style but with a modern twist, Heidi's bespoke designs appeal to every generation.

As well as unique jewellery to purchase, a host of services include:

- CAD/CAM Design Studio for commissions
- Pearl Restringing
- Resizing, Refurbishing and Repairing
- Independent NAJ Valuations
- Hand Engraving
- Bespoke pieces from existing heirlooms

Though countless customers travel far and wide to visit Heidi in person, her luxury creations are available online – ideal for that special jewellery gift wherever you are.

Within her exclusive collections, you'll discover a beautiful range of rings, earrings, pendants, bracelets, necklaces and cufflinks. Whatever the occasion, you'll find the perfect designer jewellery here.

Opening Times

Monday to Saturday 9.00am - 5.00pm

or to book an appointment via the website for a more personalised experience.





THE OLD CHURCH
8 MILL ST, OAKHAM, RUTLAND LE15 6EA
T: 01572 723823 cremehairandbeauty.co.uk

GENERAL SHOPPING AND SERVICES

Fashion & Country Shopping

CAVELLS

16 Mill Street, Oakham LE15 6EA

Telephone: (01572) 770372

Email: info@cavells.co.uk

www.cavells.co.uk

Founded over 25 years ago, Cavells is an independent boutique catering impeccably to both men and women.

The Cavells philosophy is very much centred around exceptional customer service in a relaxed and inspiring environment. The team of stylists are all passionate about making their customers look and feel great, encouraging you to both browse at your leisure or enjoy a free personal styling service where you will receive their undivided attention at no extra cost.

The curated selection of brands makes Cavells a go-to destination for anyone seeking sophisticated yet accessible fashion. With brands such as Weekend Max Mara, Luisa Cerano, Paige and Dea Kudibal, Cavells truly elevates fashion making every purchase a delightful experience.

Within Cavells sits their partnership store Landmark who offer an extensive range of country clothing, footwear and accessories. They offer some of the finest country brands including Schoffel, Le Chateau, R M Williams, Holland Cooper and many more for life in the countryside.

Cavells remains unparalleled in bringing fashion and country to your doorstep right here in Oakham.

Opening Times

Monday to Saturday 9.30am - 5.30pm

Home and Interiors

TAYLOR AND BAINES, INTERIORS

26-28 Northgate, Oakham LE15 6QS

Telephone: (01572) 723388

Email: paul@taylorandbaines.co.uk

www.taylorandbaines.co.uk

Paul Baines bespoke upholstery and curtain business based in Oakham is descended indirectly from a huge and thriving business, which in the foxhunting boom of the 1880s (when Hambleton Hall was built) kept 140 horses to deliver curtains, carpets, uniforms, furnishings etc all around this area. Nowadays Paul Baines employs the same craft skills to make sofas, arm chairs, curtains etc to order. Many Hambleton clients will have sat on one or other of his masterpieces!

His enlarged showroom on Northgate houses a huge range of pattern books from which you can choose your materials, and his work is just as suited to contemporary as to classical interiors.

Opening Times

By appointment only

Cars

TOP 555 Ltd

Burley Road, Oakham LE15 7AA

Telephone: (01572) 774830

Email: sales@top555.co.uk

www.top555.co.uk

It's quite a surprise to find an 11,500sq' showroom some half-mile from the centre of Oakham and five minutes from Hambleton. It is filled with gleaming supercars, sports cars, Bentleys, Range Rovers and more. Porsche, Ferrari and Aston Martin have multiple representations at the time of writing and every car is beautifully presented. Most are new or nearly new. Many models have long waiting lists and a shortage of supply.

This unusual resource has been developed since 2001 by the Freimuth family; Tommy and Charles. They are on hand to share their enthusiasm and advise on purchase or sale.

Whenever I see from the Hambleton Hall car park that we have an enthusiast for high-end motor cars in the house, I point them in the direction of TOP 555 and their unparalleled collection. Invariably they pass a happy hour in the company of the Freimuths' and their amazing stock.

Opening Times

Monday to Friday: 8.00am - 5.30pm

Saturday: 8.30am - 4.30pm

Sunday: Closed (phones diverted)

MEADOWS

EXECUTIVE CARS

Since 1926



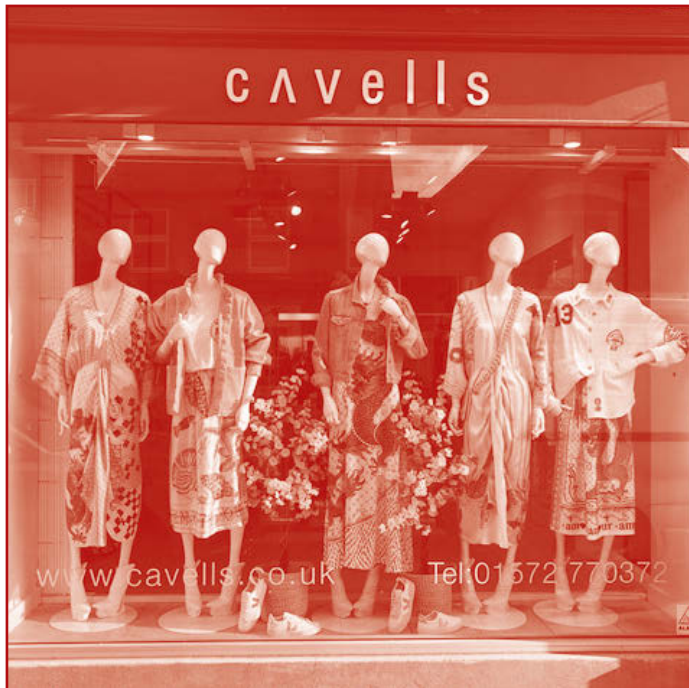
Air Conditioned Executive Travel

Airport Transfers Day Tours

+44 (0)1572 722270

bookings@meadowscars.co.uk

www.meadowscars.co.uk



cavells

16 MILL STREET, OAKHAM, RUTLAND, LE15 6EA
01572 770372 | CAVELLS.CO.UK

Taxi Service

MEADOWS EXECUTIVE CARS LTD
2 Barleythorpe Road, Oakham LE15 6NR
Telephone: (01572) 722270
Email: bookings@meadowscars.co.uk
www.meadowscars.co.uk

Brian Cooper runs this old established firm (Est. 1926) and has been looking after Hambleton Hall clients since we opened in 1980. The cars, Mercedes, E and V class, saloons, estates and MPV people carriers are comfortable, air conditioned and well maintained, the drivers smart and knowledgeable. They are very familiar with the area and the country houses, antique shops, etc. which our clients like to visit and equally important, have excellent knowledge of Central London and the airports.

With many businesses and individuals now being aware of the environmental impact of their travel, choosing Meadow Executive Cars can help. Who now offset their CO2 emissions by investing in reforestation, renewable and clean energy projects.

Wine Merchants

BAT AND BOTTLE

Unit 18D Oakham Enterprise Park, Ashwell Rd

Oakham LE15 7TU

Telephone: (01572) 759735

Mobile: 0780 9828662

Email: ben@batwine.uk

www.bat.wine

Ben Robson is an expert. He and his wife Emma preside over this unconventional shop specialising in Italian wine, situated in a warehouse in an old prison, now a trading estate, on the edge of Oakham (good for parking). Ben indulges a long-held enthusiasm for interesting wines from smaller producers throughout Italy, and is fanatical about Nebbiolo. A small additional selection covers a few worthwhile extras, including some excellent gins. Their stock is strong on medium-priced wines for everyday but comfortably includes collectables such as Barolo, Brunello etc.

They ship some larger bottles that would make great presents, a strong selection of sparklers: Prosecco, Spumante, Franciacorta and, quite uncharacteristically, Champagne, which true-to-form is bought directly from a small grower-producer.

Truly Multum in Parvo, Bat & Bottle may be a small husband/wife team but they have been awarded “Best Italian Wine Merchant” by Decanter Magazine. Their small and very personal Wine Club was also runner-up “Best Subscription Wine Club” for the last 3 years (and IWC’s in 2017) and in 2016 they represented small businesses at Downing Street as a “Small Business Saturday” winner.

The Robsons have imported artisan wine from Italy for 25 years and with their excellent selection, Bat and Bottle is a very worthwhile address for lovers of Italian wine.

Opening times

Their warehouse is their shop, which is open when they are in situ. The website is updated daily to show opening hours, do feel free to phone in advance and ensure they are there.



Bakery

HAMBLETON BAKERY & CAFÉ

Cottesmore Road, Exton, Oakham LE15 8AN

Telephone: (01572) 812995

Email: info@hambletonbakery.co.uk

www.hambletonbakery.co.uk

The bakery opened on September 1st 2008. Head baker Julian Carter was sous-chef at Hambleton Hall for 9 years. Julian's father and many generations of forebears were all bakers and he brings to our own bakery tremendous knowledge and boundless enthusiasm.

We specialise in traditional breads made using long and slow fermentations. Many clients take home a couple of sourdough loaves for the freezer.

We also make a range of additive free cakes and savouries including the "Pippin" a little pie that makes a fine snack on your way home.

The bakery has numerous shops and two cafés with advanced online orders placed via the website and collected from our Exton shop.

The Exton café opened in December 2022 and provides an agreeable environment to try our wares with a soup or salad at lunch time or for tea or coffee.

Opening Times

Exton Shop & Café - Cottesmore Road, LE15 8AN

Monday to Saturday: 8.00am - 5.00pm

Sunday & Bank Holidays: 8.00am - 4.00pm

Oakham Shop - 17 Gaol Street, LE15 6AL

Monday to Saturday: 8.00am - 4.00pm

Stamford Shop - 1 Ironmonger Street, PE9 1PL

Monday to Saturday: 8.00am - 4.00pm

Market Harborough - 12 Church Street, LE16 7AA

Monday to Saturday: 8.00am - 4.00pm

West Bridgford - 101 Melton Road, NG2 6ET

Monday to Saturday: 8.00am - 4.30 pm

Oundle - Station Road, Oundle Wharf, PE8 4DE

Monday to Saturday: 8.00am - 4.00pm

Rothley - 15 Woodgate, LE7 7LL

Monday to Saturday: 8.00am - 4.30 pm

St Ives Shop & Café - 3 Library Row, Station Road, PE27 5BW

Monday to Saturday: 8.00am - 5.00pm

Bank Holidays: 8.00am - 4.00pm

WINNER OF ITV'S BRITAIN'S BEST BAKERY.

BIA BAKER OF THE YEAR

“Bespoke Furniture
& Interiors
hand crafted
in Oakham.”

26–28 Northgate Oakham Rutland LE15 6QS
Tel 01572 723388
Email paul@taylorandbaines.co.uk
www.taylorandbaines.co.uk

Hair & Beauty

CREME HAIR & BEAUTY

The Old Church, 8 Mill Street, Oakham LE15 6EA

Telephone: 01572 723823

Email: info@cremehairandbeauty.co.uk

www.cremehairandbeauty.co.uk

Creme (pronounced ‘Cream’) is quite an institution in Oakham. Founded by Chris Gunby some 28 years ago, they have for some 15 years occupied Oakham’s former Catholic Church on Mill Street.

Chris has built his team to include 16 hairdressers, two of whom have been with him since the start. It is the long service and experience of the team that Chris points to as the main source of their success; together with their fine and lofty building and bringing together with skilled hairdressers, nail care, massage and a full range of beauty treatments.

Creme offer a warm welcome to Hambleton Hall clients.

Opening Times:

Tuesday to Saturday 9am – 5pm

Thursday late opening until 8pm

NOTES



NOTES



“FAY CE QUE VOUDRAS”

Saint Augustine (354-430 AD) wrote “Dilige et quod vis fac”. “Love - and do as you please”. More than 1000 years later Francois Rabelais (1494?-1553) in ‘Gargantua’ has as a hero of his story the Abbot of Thélème who is rewarded for warlike deeds by the gift of his own Abbey. The motto which the unusual abbot uses for his abbey is “Fay Ce Que Voudras” - “Do as you please” in old French. It is notable that he has cheekily used only the second half of St. Augustine’s precept, the meaning of which might be different without the preliminary ‘Love’ which presumably meant - “Love God” and/or your neighbour.

In 1750 Sir Francis Dashwood, John Wilkes and others restored Medmenham Abbey near Henley and used the place as the headquarters of the Hell Fire Club. Inspired by Rabelais the motto inscribed over the door and fireplace was “Fay Ce Que Voudras”.

Wilkes described the activities of the Hell Fire Club in the following terms: “a set of worthy, jolly fellows, happy disciples of Venus and Bacchus, got occasionally together to celebrate women in wine, and to give more zest to the festive meeting they plucked every luxurious idea from the ancients and enriched their own modern pleasures with the tradition of classical luxury.”

During the 19th century Medmenham became a popular tourist attraction and some of the more prudish Victorians convinced themselves that the Hell Fire Club were Devil Worshipers, but Wilkes description of their activities seems to have been more accurate.

It is entirely consistent with what we know of Walter Marshall that he should have chosen “Fay Ce Que Voudras” as the motto of his newly built Rutland hunting-box in 1881. He may have read Rabelais, more likely he had visited Medmenham and knew all about the antics of the Hell Fire Club in the previous century.

Marshall, as we know from his scrap-book and his contemporary reputation, was suffocated by the prudishness of the mid-Victorian era, and was inclined to cock a snook at the prevailing morality of his age. “Nunc Hora Bibendi” (“now is the time for a drink”) appears on the sundial on the south front of Hambleton Hall. He could not have chosen a more appropriate motto for his front door than “Fay Ce Que Voudras”.



A still life painting in a monochromatic reddish-brown color palette. On the left, a tall, elegant glass filled with a dark liquid (sloe gin) stands on a wooden surface. To the right and in front of the glass, a branch of a sloe bush with several leaves and clusters of small, round berries is arranged. The background is a soft, textured wash of the same color.

GLADWELL & PATTERSON

— *experts in fine art since 1746* —

A fine art business built on trust, integrity and
a discerning love for art. We look forward to
welcoming you to our Stamford Gallery.

1 High Street, Stamford, PE9 2AL

07866 450 070 / 07772 307807

www.gladwellpatterson.com

Sloe Gin by Paul S. Brown, (American, Contemporary).



Hambleton Hall, Hotel and Restaurant, Hambleton, Oakham, Rutland LE15 8TH
Telephone: Oakham (01572) 756991 Fax: (01572) 724721

email: hotel@hambletonhall.com website: www.hambletonhall.com